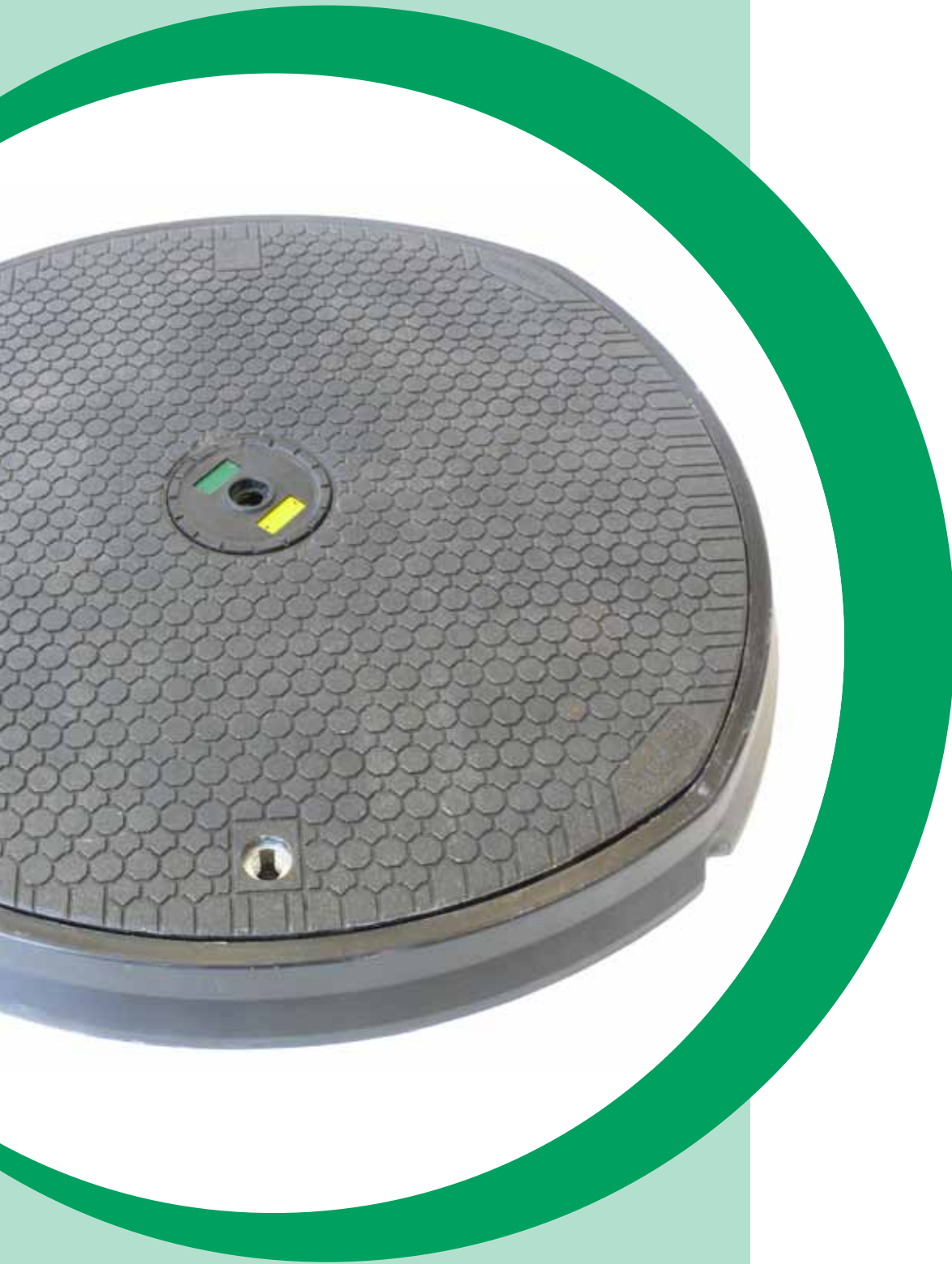


SMARTFLEX™

Smartflex Composite Manhole Covers



SMARTFLEX MANHOLE COVERS



SMARTFLEX Composite Manhole Covers are designed to offer a light weight alternative to steel manhole covers. These covers are designed to comply with EN124, the European standard that requires the cover to meet or exceed a 25 ton load (C250).

SMARTFLEX Composite Manhole Covers combine technology, design and composite materials with reliable manufacturing processes to deliver 'fit for purpose' covers that offer an attractive commercial solution.

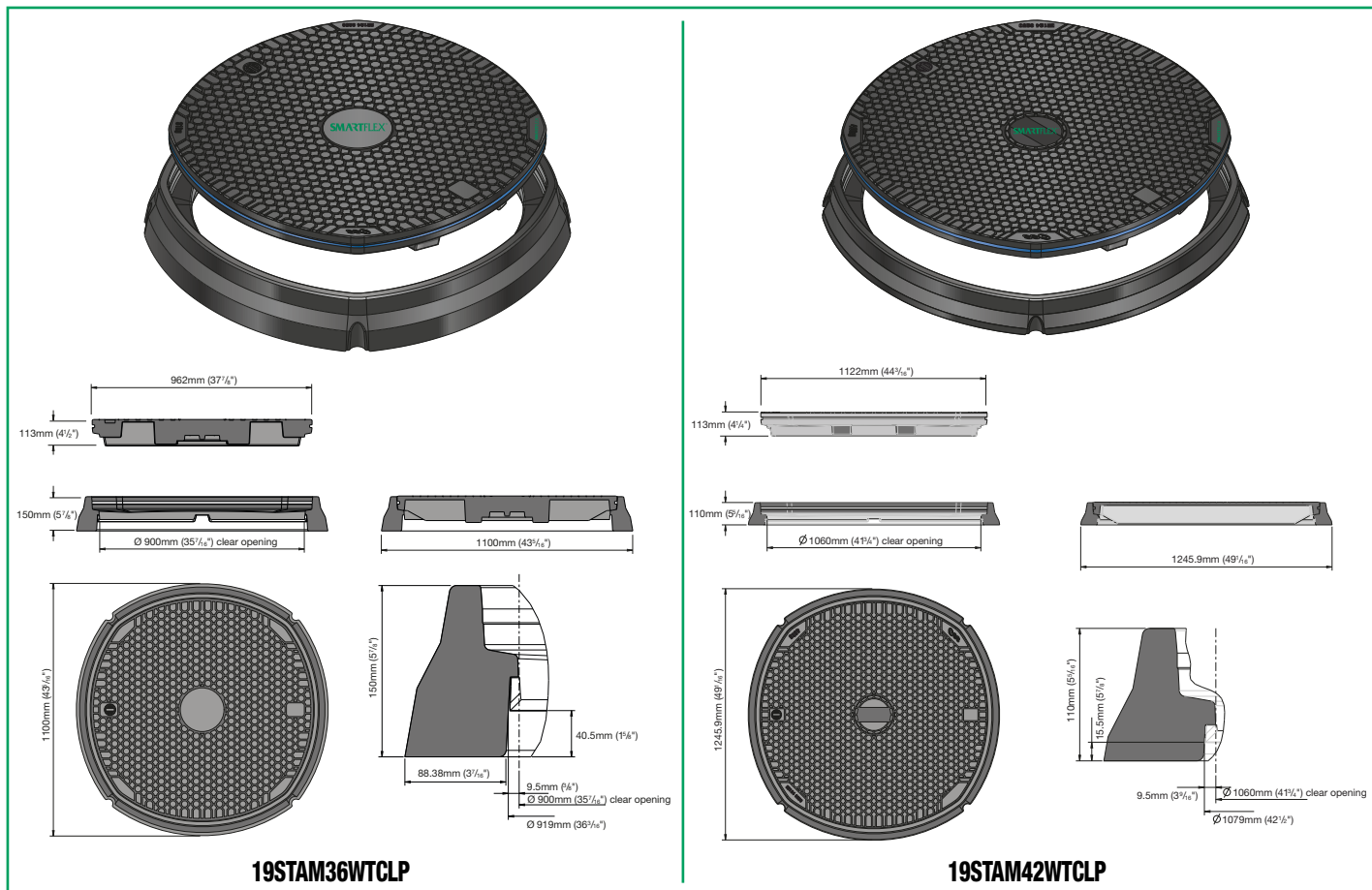
The surface of **SMARTFLEX Composite Manhole Covers** has a **better slip-resistance** than metal covers when wet, dry, or worn state and is comparable with a good highway surface. One of the benefits of **SMARTFLEX Covers** is single person removal and replacement without risk of injury, when using the **specific ergonomic lifting tool**.

SMARTFLEX Composite Manhole Covers are robust and their top surface has an **estimated life of 15 to 18 years** based on 15,000 Foot Contact Events on the same contact point each day for the whole period. A wear indicator is fitted to all our standard covers. Longevity, ease of moving and superior performance allows a **reduction in maintenance programs**.

FITTING A **SMARTFLEX COMPOSITE MANHOLE COVER** IS THE BEST "WHOLE LIFE" CHOICE.

Benefits of the SMARTFLEX Composite Manhole Covers:

- Light enough for one person to handle
- Exceeds the H20 and HS20
- Exceeds the EN124 (25 tons)
- Class C250 and D400 in accordance with EN124 standard
- Structurally Superior
- Anti-slip Surface
- Ease of Removal/Replacement
- Low wear characteristics
- Security locking
- Water, sand and airtight
- Fire proof
- Electrically non-conductive
- Thermal insulation
- Reduced Maintenance programme
- Pry Points and key housings
- Venting
- Poor thermal conductivity
- Non-corrosive
- Automatic meter reading
- Secure in the location
- 15 year product guarantee



- Black is the standard colour.
- All **SMARTFLEX composite manhole covers** are solid. We do not compromise the quality with cheap wood or foam fillers.
- The 42" version is available with and without **central deep cap** with product identifying colored flag.
- SMARTFLEX now offers a better solution for your raintight applications with the **Cam Lock Cover**.

Part Number	Description	Weight	
		KG	LB
19STAM36WTCLP	36" Raintight composite manhole cover, frame, seal, plug and lock	46	101
19STAM42WTCLP	42" Raintight composite manhole cover, frame, seal, plug and lock	53	117
19STAM42WTCLPDC	42" Raintight composite manhole cover, frame, seal, plug and lock and deep cap	53	117

Two different removal/replacement tools are also available, with or without seal breaker.





Registered Office and Headquarters

via Stefano Ferrario
21052 Busto Arsizio (VA) Italy
ph. ++39 0331 344211
fax ++39 0331 351860
info@nupigeco.com
www.nupigeco.com

Production, Operations and Administration Centre

via dell'Artigianato 13
40023 Castel Guelfo (BO) Italy
ph. ++39 0331 344211
fax ++39 0542 670851
info@nupigeco.com
www.nupigeco.com

Production Facility

via Colombarotto 58
40026 Imola (BO) Italy
ph. ++39 0331 344211
fax ++39 0542 670851
info@nupigeco.com
www.nupigeco.com

U.S.A. Subsidiary
Nupi Americas, Inc.
1511 Superior Way,
Houston - TX 77039 - U.S.A.
Phone ++1 281 590 4471
Fax ++1 281 590 5268
info@nupiamericas.com
www.nupiamericas.com

